



Republika ng Pilipinas

Kagawaran ng Edukasyon

Rehiyon V (Bicol)

TANGGAPANG PANSANGAY NG CATANDUANES



25 March 2024

DIVISION MEMORANDUM
OSDS-CID-DM 142, s. 2024/MTC

ADMINISTRATION OF THE SOUTHEAST ASIA PRIMARY LEARNING METRICS (SEA-PLM) MAIN SURVEY

To: Assistant Schools Division Superintendent
Chief Education Supervisors, SGOD & CID
Division Testing Coordinator
Education Program Supervisors
Public Schools District Supervisors
SEPS/EPS II of Monitoring & Evaluation
Schools Heads of Elementary and Secondary Schools
All Others Concerned

1. Corollary to Regional Memorandum No. 303, s. 2024, the Southeast Asia Primary Learning Metrics (SEA-PLM) main survey shall be conducted through the Bureau of Education Assessment (BEA) between April and May 2024. The SEA-PLM is a regional extensive assessment designed to measure Grade 5 students' learning outcomes in Reading, Writing, Mathematics and Global Citizenship which is developed by and for Southeast Asian countries by the Southeast Asian Ministers of Education Organization (SEAMEO) Secretariat and the United Nations Children's Fund's-East Asia Pacific Regional Office (UNICEF-EAPRO).

2. The sampled school in this division is Summit Elementary School of Viga West District which is scheduled to be tested on May 10, 2024. Relative to this, the CID and SGOD Chiefs, DTC, concerned EPSs, SEPS and EPS II of Monitoring and Evaluation, In-charge of the District, School Heads, Master Teachers, teachers and non-teaching staff are advised to undertake preparations such as:

- a) holding of orientation to the learners, teachers, non-teaching staff, and community;
- b) after or before-class daily review, drills, mock tests among others;
- c) developing, pooling and downloading of test items from legitimate sources;
- d) inviting the Master Teachers (MTs) and School Heads (SHs), retired teachers or community members who are experts in reading, writing, mathematics and in global citizenship to review the examinees;
- e) lobbying for the snacks, office supplies and other needs of the examinees;
- f) allotting funds for the preparations for the said test;
- g) conducting Saturday review classes with the permission of the SDS and parents through consultation;
- h) provision of technical assistance (for SGOD & CID personnel);



San Roque, Virac, Catanduanes
052 - 8114063
catanduanes@deped.gov.ph
www.deped.gov.ph
DepEd Tayo - Region V - Catanduanes



Republika ng Pilipinas
Kagawaran ng Edukasyon
Rehiyon V (Bicol)
TANGGAPANG PANSANGAY NG CATANDUANES

- i) other preparations that are deemed effective in ensuring better SEA-PLM results.
4. **In preparation for the said examination, the national center will hold a national orientation for testing personnel from April 3-4 (Batch 2), at Teachers' Camp in Baguio City.** Relative to this, the following personnel are advised to attend, to wit:

No.	Name of Personnel	Position	Designation
1	Cynthia D. Usero	SPII/In-Charge of the District	Test Administrator
2	Ma. Liza R. Arrojo	School Principal II	Test Administrator
3	Perfecto M. Usco	School Principal I	School Coordinator

5. Travel, meal, communication, office supplies and other allowable expenses incurred in the said assessment shall be charged to local funds/MOOE while the travel, meal and other incidental expenses by the participants during the orientation shall be charged to the Program Support Fund (PSF) to be downloaded by BEA subject to the relevant accounting rules and regulations.
7. For your information, dissemination and compliance.


SOCORRO V. DELA ROSA, CESO V
Schools Division Superintendent

Reference: As Stated

To be indicated in the **Perpetual Index**
Under the following Subjects:
Assessment
SEA-PLM
Southeast Asia Assessment

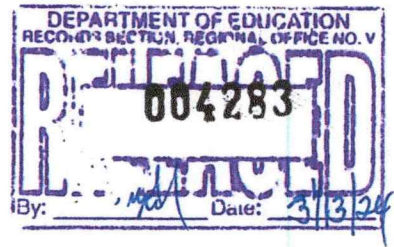
CID/MTC
03/25/2024



San Roque, Virac, Catanduanes
052 - 8114063
catanduanes@deped.gov.ph
www.depedcatanduanes.com
DepEd Tayo - Region V - Catanduanes



Republic of the Philippines
Department of Education
 REGION V - BICOL



12 March 2024

REGIONAL MEMORANDUM

No. ___ s. 2024

000303

CONDUCT OF THE SOUTHEAST ASIA – PRIMARY LEARNING METRICS
 (SEA-PLM) MAIN SURVEY

To : Schools Division Superintendents
 CID Chiefs
 Division Testing Coordinators
 Concerned School Heads

1. The Department of Education through the Bureau of Education Assessment (BEA) shall conduct the Southeast Asia – Primary Learning Metrics (SEA-PLM) Main Survey between April and May, 2024. The SEA-PLM is a regional large-scale assessment that aims to evaluate the learning outcomes of Grade 5 students in reading, writing, mathematics, and global citizenship.
2. The SEA-PLM was developed by and for Southeast Asian countries by the Southeast Asian Ministers of Education Organization (SEAMEO) Secretariat and the United Nations Children’s Fund’s -East Asia Pacific Regional Office (UNICEF-EAPRO).
3. Among the Ninety-Four (94) sampled schools divisions in the country, Eight (8) SDOs and Twelve (12) schools in Region V were identified to participate on said Main Survey:

SDO	School	School ID
Albay	Guinobatan East CS	111710
	Camalig South CS	111641
	Gabawan ES	111686
Camarines Norte	Palali Integrated School	500635
	San Rafael ES	112157
Camarines Sur	Sabang ES	112490
Catanduanes	Summit ES	113332
Legazpi City	Forbes Academy	403845
Masbate	Tinapian ES	113442
	Felomino Yray ES	113846



Regional Center Site, Rawis, Legazpi City 4500

0969 516 9555

region5@deped.gov.ph

Naga City	Calauag ES	114497
Sorsogon	Osmena ES	114045

4. The test will be administered on a paper-pencil based modality.
5. Attached are sample test questions presented during the virtual meeting. Schools may use these as their guide in preparing SEA-PLM like test questions.
6. To ensure the smooth flow of the conduct of said assessment, the Regional and Division Testing Coordinators (RTC-DTCs), Schools Heads (SH) and assigned Test Administrators (TAs) of sampled schools are expected to attend the SEA-PLM virtual meeting on March 7, 2024 and Face to Face National Orientation on April 3-4 at the Teacher's Camp, Baguio City.
7. Transportation and accommodation of participants in the national orientation shall be charged to the Bureau subject to the usual accounting and auditing rules and regulations
7. Widest dissemination of and compliance with this memorandum is desired.


GILBERT T. SADSAD
Regional Director

References:

1. DepEd Order Nos. 55, s. 2016; 27, s.2022; 29, s.2022 and 003, s.2024
2. DepEd Memorandum -CT-2024-060
3. SEA_PLM Virtual Orientation, March 7, 2024

Encls:As stated

To be indicated in the Perpetual Index
under the following subjects:

Assessment Learners Schools

Clmd/scb
3/12/2024

Writing Literacy Framework



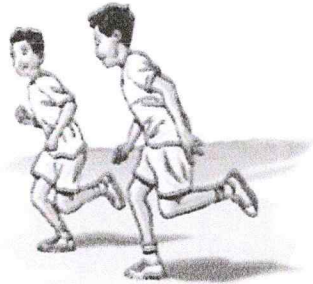
Writing Literacy refers to constructing meaning by generating a range of written texts to express oneself and communicate with others, to meet personal, societal, and civic needs.

In Writing Literacy, task characteristics are evaluated based on the following: content (types of written text); context (any situations that triggers the writing task to take place); and process (application of knowledge and a range of skills in constructing texts).

Exhibit 18: Example writing task: Brothers' Race

Brothers' Race

Use the picture to help you write a story. Write as much as you can.



One day, Kai challenged his older brother to a race.

Exhibit 19: Example writing task: Celebration

New Year celebrations

Write a letter to a friend in another country, describing New Year celebrations in your country. Tell your friend about:

- Places and times
- People
- Food
- Dress

Your description should be interesting. Write your letter on the lines below. Dear Friend,
From your friend,



Exhibit 23: Example writing task: Scenes we see and marking guide extract

Scenes we see

Write two sentences to describe this picture



1. _____

2. _____



Mathematics Literacy Framework



Mathematical Literacy refers to a learner's capacity to use mathematical knowledge and skills in solving problems and in dealing with different kinds of challenges they may encounter in a variety of contexts, where mathematics may be relevant to those problems and challenges.

In Mathematical Literacy, task characteristics be evaluated based on the following:



- **content** (mathematical knowledge and skills acquired to find a mathematical solution) like Number and Algebra, Chance and Data, Measurement, Geometry
- **context** (the situation in which the problem to be solved has arisen) such as personal context, local context and wider-world context
- **process** (the actions required to solve the problem) such as translate, apply, interpret and review.

Exhibit 2: Example intra-mathematical item, presented in clear mathematical formulation (no translate step required)

$12 \times 6 = ?$

A 68
B 78
C 603
D 618

Exhibit 3: Example item Planting Seeds set in the local context category and illustrating the apply process category but where the translate process is also involved

Planting Seeds

There are 7 people in Mali's family.
They need to plant 850 seeds.
They plan for each person to plant about the same number of seeds.
About how many seeds should each person plant?

A about 12 seeds
B about 80 seeds
C about 120 seeds
D about 600 seeds

Exhibit 4: Example item Mangoes, which illustrates the number and algebra content category, the personal context category and the translate process

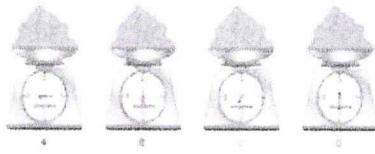
Mangoes

Which of these shows how to work out how many pomegranates there are?

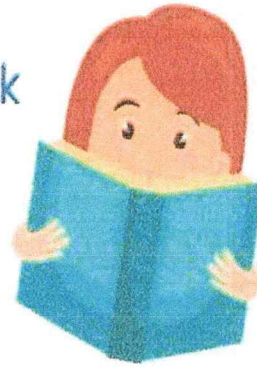
- A 4×3
- B $3 \times 3 \times 3$
- C $4 + 3$
- D $4 + 3$

Exhibit 5: Example item Bagina Peanuts set in the local context, illustrating the measurement and geometry content category and the translate process

Which set of scales shows 400 grams of peanuts?



READING LITERACY Framework



Reading Literacy refers to understanding, using, and responding to a range of written texts to meet the personal, societal, economic, and civic needs

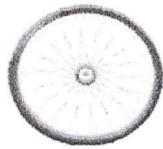
Reading Literacy was assessed using the three (3) task characteristics:

content (the text variables: text format and text type);

context (the situation to which texts are relevant); and

process (the cognitive processes used by readers)

Exhibit 13: Example reading item - Label



- A Car
- B Shoe
- C Wheel
- D Cat



- A Gloves
- B Grapes
- C Girl
- D Road

Test formats

- CONTENT** (Text format and text type) Narrative, Descriptive, Persuasive, Instructional, Transactional, Label)
- CONTEXT** (Personal, local or wider world)
- PROCESS** (Locating, Interpreting, Reflecting, Word Recognition)

Responses:

- Select response (Multiple Choice)
- Constructed response (responding to questions)

Exhibit 13: Example reading item: Country Fact File - reflect item

How is information shown in this text?

- A in sentences
- B in paragraphs
- C in a table
- D in a map

Exhibit 11: Example reading item: The Hole

The Hole

'I can see something shiny at the bottom,' said Kit. 'Maybe it's a gold coin.'

'Don't be silly,' said Sara, peering into the hole. Her younger brother was always seeing things, creating objects out of nothing.

'Maybe it's a sword,' continued Kit. 'Maybe a king buried a gold sword in the ground many years ago, and then forgot about it.'

'Maybe it's dirt, covered in dirt, covered in more dirt,' said Sara. 'It's just a hole, probably made by a wild animal.'

'You are wrong!' exclaimed Kit. 'No animal could make a hole as big as this!'

'Well, if you are so sure this is not an animal's hole, perhaps you should climb into it.'

Kit began to turn pale. 'Erm ... No. I cannot go in the hole ... because ... I have a sore foot!' Sara smiled; it had nothing to do with Kit's foot. A big hole could mean a big animal.

'I have an idea,' she said, picking up a stone that lay beside her. 'I will drop this into the hole. If we hear a clink, there is treasure. If we hear a thud, there is dirt. If we hear a yelp, there is an animal.'

Sara dropped the stone and they heard nothing for a moment. Then they heard a splash.

Sara says 'I have an idea'.

What is her idea?

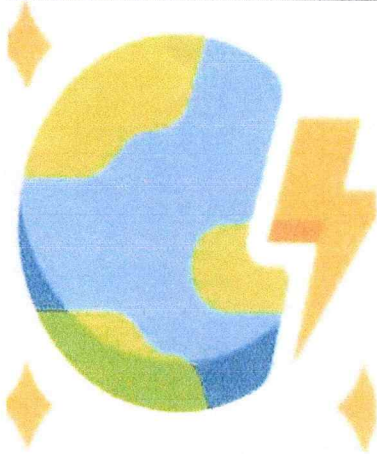
A to push her brother into the hole
 B to go into the hole to explore
 C to throw a coin into the hole
 D to drop a stone into the hole

Exhibit 12: Example reading item: Country Fact File – interpret item

	Afghanistan	Vietnam	Philippines	Nepal
				
Climate	arid to semi-arid; freezing winters	tropical in south; monsoonal in north	usually hot and humid	subtropical in south;
Geography	landlocked and mountainous	the fertile Mekong river delta covers a large part of south	made up of 7,107 islands	landlocked; contains eight of the
Main	wheat, fruits, nuts;	paddy rice, coffee,	sugarcane,	rice, corn,
Typical exports (goods)	fruits and nuts, carpets, saffron	crude oil, marine products, rice, coffee, rubber;	electronic equipment, transport	carpets, clothing, leather
Wildlife	the Marco Polo sheep; it has the longest horns of	the saola (a kind of antelope); one of the world's rarest	the Philippine Eagle; the largest eagle in the world	the one-horned rhinoceros;

According to the text, which country has the same export as Vietnam?

.....



Global Citizenship Framework

- **Global Citizenship (GC)** is described as a sense of global belonging, solidarity, and collective identity; a non-legal status beyond the state (UNESCO, 2013).
- In SEA-PLM assessment, GC aims to assess the students' attitudes and values relating to global citizenship content that is deemed appropriate and accessible to Grade 5 students in any given SEA-PLM cycle.



Topics on Global Citizenship

- What is happening in countries near the Philippines
- What is happening in the world
- How things that happen in other countries affect the Philippines
- Understanding people that are different to them
- How to solve disagreements with classmates peacefully

How they can help solve problems in their own community

How to protect the environment

Pollution in the Philippines

Pollution in places outside the Philippines

Loss of natural resources

Climate change





Republic of the Philippines
Department of Education
BUREAU OF EDUCATION ASSESSMENT

Office of the Director

March 4, 2024

GILBERT T. SADSAD

Regional Director
DepEd-Region 5

Attention: Schools Division Superintendents
Division Testing Coordinators
**Albay, Camarines Norte, Camarines Sur,
Catanduanes, Legaspi City, Masbate, Naga City
Sorsogon**

Dear **Director Sadsad:**

Greetings!

The Department through the Bureau of Education Assessment (BEA) will conduct the main survey for the Southeast Asia Primary Learning Metrics (SEA-PLM) 2024 between April and May 2024. The SEA-PLM is a regional large-scale assessment designed to assess Grade 5 students' learning outcomes in reading, writing, mathematics, and global citizenship. It is developed by and for Southeast Asian countries by the Southeast Asian Ministers of Education Organization (SEAMEO) Secretariat and the United Nations Children's Fund's-East Asia Pacific Regional Office (UNICEF-EAPRO).

In preparation for the SEA-PLM 2024, the national center will hold a national orientation for testing personnel from April 1-5, 2024, at the Baguio Teachers' Camp in Baguio City. The event's details will be sent in a separate memorandum. In connection with this, we would like to request your kind assistance in administering the SEA-PLM 2024 main survey to select Grade 5 students in your region. The attached lists may serve as your reference for the sample schools and in delegating the appropriate DepEd personnel for this assessment endeavor.



2/F Bonifacio Building, DepEd Complex, Meralco Avenue, Pasig City 1600
Telephone No.: (02) 8631-6921 (Telefax); 8631-2588; 8631-2589; 8631-2571; 8631-2591
Email Address: bea.od@deped.gov.ph; bea.ead@deped.gov.ph; bea.erd@deped.gov.ph

DepEd Philippines

@depedphilippines

@DepEd_PH

www.deped.gov.ph



Republic of the Philippines
Department of Education
BUREAU OF EDUCATION ASSESSMENT

Office of the Director

- Table 1 lists the elementary schools that will participate in the SEA-PLM 2024 Main Survey.
- Table 2 contains the list of DepEd personnel who will administer the SEA-PLM Main Survey.

Finally, this Bureau seeks the assistance of the Division Testing Coordinators (DTCs) in compiling the names and contact details of the participants using the format in the Google Drive <https://tinyurl.com/SEAPLM2024MS> SEA-PLM 2024 MS - National Orientation Participants (Excel file).

Kindly accomplish and submit the form on or before **March 11, 2024**, to give the national center (BEA-ERD) enough time to prepare the training-related documents. This Bureau will cover the expenses incurred such as roundtrip transportation allowance (*residence to venue*), airfare, and accommodation with full board meals, subject to the usual accounting and auditing rules and regulations.

Our staff, Ms. Sheryll Ann R. Legarte (sheryll.legarte@deped.gov.ph; 8631-2591) shall coordinate with your division offices for other matters related to SEA-PLM national orientation.

Your continued support and cooperation with our assessment programs is greatly appreciated.

Very truly yours,

NELIA V. BENITO, PhD, CESO IV

Director IV



2/F Bonifacio Building, DepEd Complex, Meralco Avenue, Pasig City 1600
Telephone No.: (02) 8631-6921 (Telefax); 8631-2588; 8631-2589; 8631-2571; 8631-2591
Email Address: bea.od@deped.gov.ph; bea.ead@deped.gov.ph; bea.erd@deped.gov.ph

DepEd Philippines

@depedphilippines

@DepEd_PH

www.deped.gov.ph